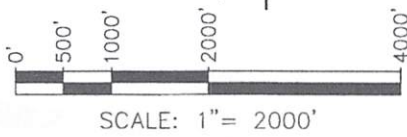
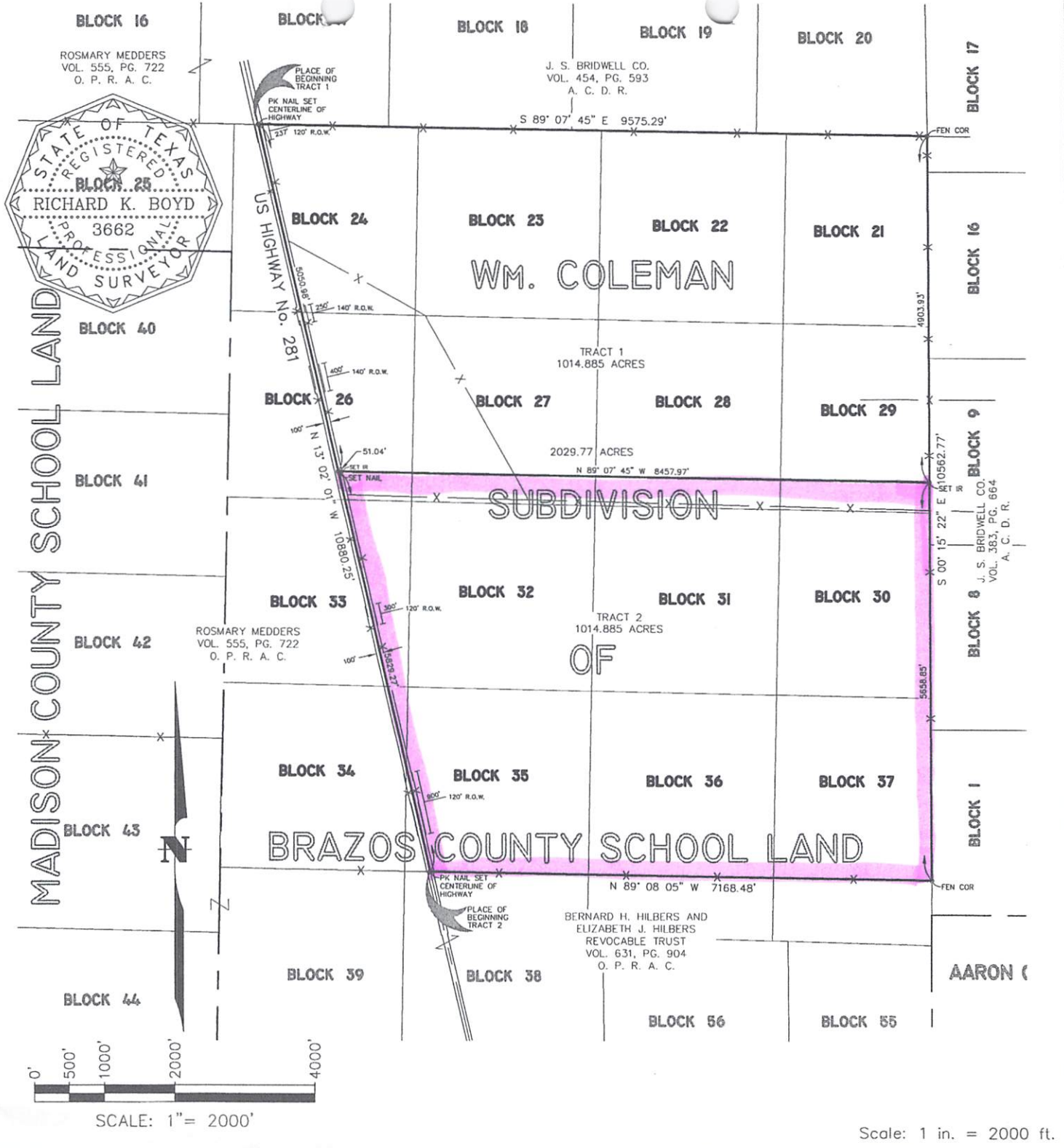


C:\WALT\2011\27554\27554S1.DWG 2029.77 ACRES P-7/15/2011 8:37 AM S-7/15/2011 8:37 AM WALT



Scale: 1 in. = 2000 ft.

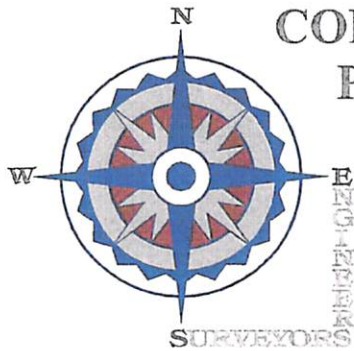
THE ABOVE DESCRIBED TRACT WAS SURVEYED JULY, 2011 AND THE DIMENSIONS SHOWN ARE HEREBY CERTIFIED TO BE TRUE AND CORRECT.

2 TRACTS OUT OF BLOCKS 21, 22, 23, 24, 26, 27,  
 28, 29, 30, 31, 32, 33, 34, 35, 36 AND 37, OF THE  
 WILLIAM COLEMAN SUBDIVISION OF BRAZOS COUNTY  
 SCHOOL LAND, ARCHER COUNTY, TEXAS

SURVEY FOR: MEDDERS OIL COMPANY

*Richard K. Boyd* 7/15/11  
 RICHARD K. BOYD  
 REGISTERED PROFESSIONAL LAND SURVEYOR NO. 3662

**CORLETT, PROBST & BOYD, P.L.L.C.**  
 Engineers & Surveyors  
 PH. (940)723-1455, FAX (940)397-0549  
 4605 Old Jacksboro Highway  
 Wichita Falls, Texas, 76302



**CORLETT,  
PROBST &  
BOYD, P.L.L.C.**

Texas Registered Engineering Firm F-279

*Principals*  
Dennis L. Probst, P.E., R.P.L.S.  
T. Dean Hinton, P.E.  
Steve Gibson, R.P.L.S.

July 13, 2011

**FIELD NOTES**

**TRACT 2**

FIELD NOTES OF A 1,014.885 ACRE TRACT OF LAND OUT OF BLOCKS 26, 27, 28, 29, 30, 31, 32, 33, 34, 35, 36 AND 37 OF THE WILLIAM COLEMAN SUBDIVISION OF BRAZOS COUNTY SCHOOL LAND, ARCHER COUNTY, TEXAS AND MORE PARTICULARLY DESCRIBED BY METES AND BOUNDS AS FOLLOWS:

BEGINNING at a PK nail set at the intersection of the center of the right-of-way of U.S. Highway 281 with the South line of Block 35 of the William Coleman Subdivision of Brazos County School Land;

THENCE N 13° 02' 01" W with the center of said U.S. 281 right-of-way a distance of 5,829.27 feet to a spike set for the Northwest corner of this tract;

THENCE S 89° 07' 45" E, at 51.04 feet pass an iron rod set in the East right-of-way line of U.S. Highway 281 right-of-way and continuing on the same course, in all a distance of 8,457.97 feet to an iron rod set in the East line of Block 29 of the William Coleman Subdivision of Brazos County School Land for the Northeast corner of this tract;

THENCE S 00° 15' 22" E with the fenced East line of Blocks 29, 30 and 37, of the William Coleman Subdivision of Brazos County School Land a distance of 5,658.85 feet to a fence corner at the Southeast corner of said Block 37 for the Southeast corner of this tract.

THENCE N 89° 08' 05" W with the fenced South line of said Blocks 37, 36 and 35 a distance of 7,168.48 feet to a PK nail set in the center of the right-of-way of U.S. Highway 281 to to the PLACE OF BEGINNING and containing 1,014.885 acres of land.

RKB/cm  
ColemanBrazosCSL.fn2