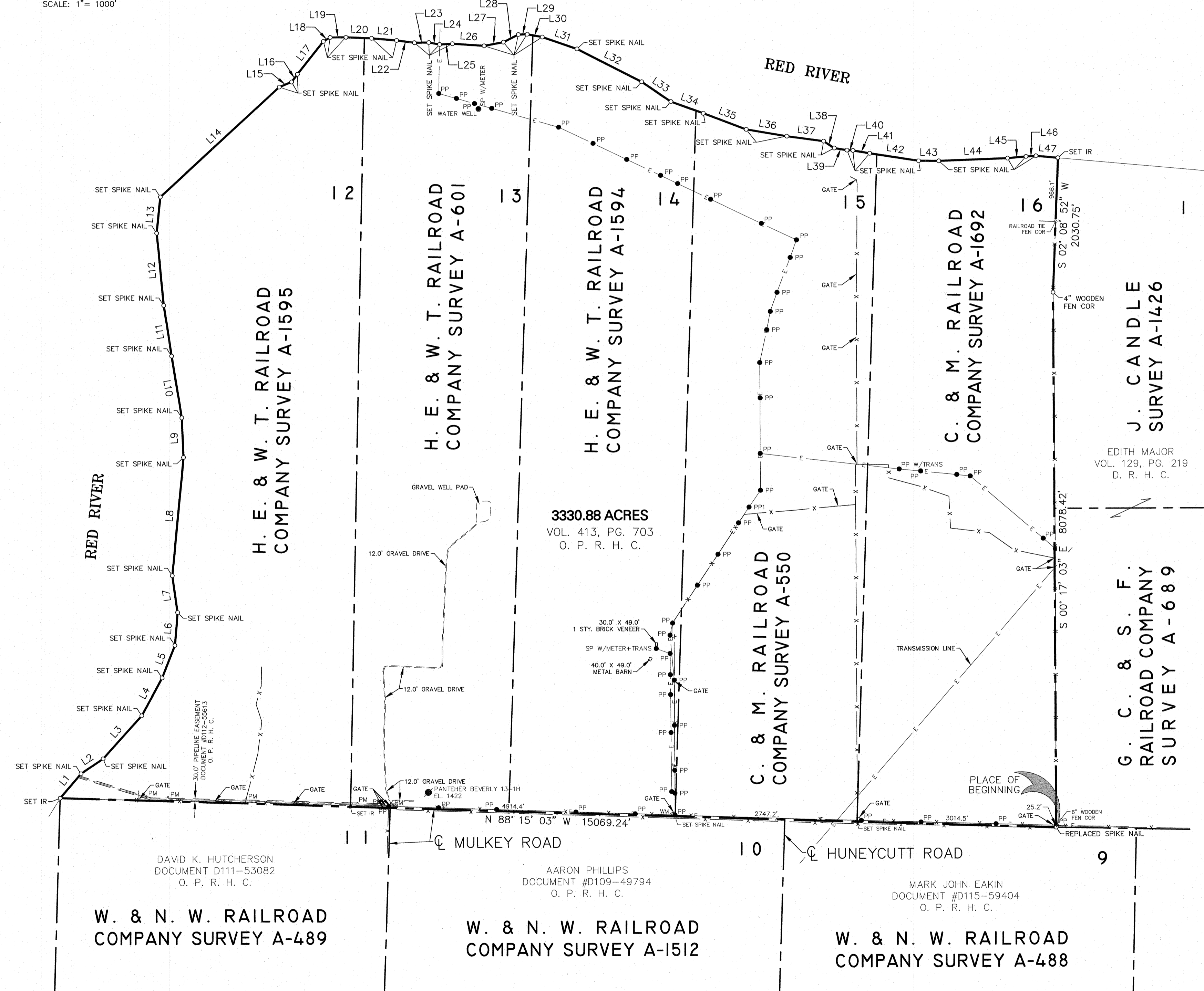


LEGEND

| | |
|----------------|---|
| ● PM | PIPE LINE MARKER |
| ● PP | POWER POLE |
| ● PP W/TRANS | POWER POLE WITH TRANSFORMER |
| ● SP W/METER | SERVICE POLE WITH METER |
| ● SP W/M+TRANS | SERVICE POLE WITH METER AND TRANSFORMER |
| ○ WM | WATER METER |
| ○ WW | WATER WELL |
| ● | WELL |
| — E — | EXISTING ELECTRIC LINE |
| — X — | EXISTING FENCE |
| — FND IR — | PROPERTY CORNER (AS NOTED) |



| Line Table | | |
|------------|-----------------|----------|
| Line # | Direction | Length |
| L1 | N 40° 26' 20" E | 483.79' |
| L2 | N 56° 22' 33" E | 403.18' |
| L3 | N 41° 59' 05" E | 875.63' |
| L4 | N 28° 26' 22" E | 647.16' |
| L5 | N 21° 32' 06" E | 526.66' |
| L6 | N 04° 44' 04" E | 497.31' |
| L7 | N 08° 07' 48" W | 562.87' |
| L8 | N 05° 31' 03" E | 1791.64' |
| L9 | N 02° 30' 48" W | 597.91' |
| L10 | N 09° 15' 24" W | 945.11' |
| L11 | N 08° 46' 57" W | 775.08' |
| L12 | N 05° 30' 24" W | 1094.33' |
| L13 | N 05° 44' 02" E | 551.07' |
| L14 | N 47° 24' 09" E | 2444.13' |
| L15 | N 67° 39' 45" E | 204.08' |
| L16 | N 36° 55' 44" E | 147.21' |
| L17 | N 38° 12' 46" E | 633.92' |
| L18 | N 59° 50' 02" E | 118.97' |
| L19 | N 89° 20' 06" E | 238.10' |
| L20 | S 87° 28' 38" E | 389.59' |
| L21 | S 85° 11' 03" E | 378.80' |
| L22 | S 82° 35' 31" E | 272.43' |
| L23 | N 88° 59' 44" E | 217.09' |
| L24 | S 79° 54' 18" E | 167.42' |
| L25 | N 86° 54' 49" E | 193.60' |
| L26 | S 86° 12' 58" E | 480.09' |
| L27 | N 79° 18' 48" E | 297.11' |
| L28 | N 63° 01' 29" E | 253.79' |
| L29 | N 88° 03' 00" E | 133.89' |
| L30 | S 79° 36' 31" E | 231.83' |
| L31 | S 71° 07' 13" E | 555.64' |
| L32 | S 63° 06' 32" E | 1097.14' |
| L33 | S 55° 51' 42" E | 532.62' |
| L34 | S 70° 04' 48" E | 520.06' |
| L35 | S 69° 26' 27" E | 695.62' |
| L36 | S 80° 24' 36" E | 619.80' |
| L37 | S 82° 05' 18" E | 560.10' |
| L38 | S 56° 49' 41" E | 190.37' |
| L39 | S 80° 37' 14" E | 196.69' |
| L40 | S 87° 19' 02" E | 89.76' |
| L41 | S 80° 18' 30" E | 257.47' |
| L42 | S 81° 15' 23" E | 747.73' |
| L43 | S 89° 27' 58" E | 304.51' |
| L44 | N 87° 55' 57" E | 1041.98' |
| L45 | N 84° 50' 57" E | 279.73' |
| L46 | N 86° 46' 23" E | 150.51' |
| L47 | S 84° 50' 58" E | 333.28' |

FIELD NOTES

FIELD NOTES OF 3330.88 ACRES OUT OF SECTIONS 12, A-1595, 13, A-601, 14, A-1594, H. E. & W. T. RAILROAD COMPANY SURVEY AND SECTIONS 15, A-550, 16, A-1692, C. & M. RAILROAD COMPANY SURVEY, HARDEMAN COUNTY, TEXAS, SAID 3330.88 ACRES BEING THE SAME TRACT OF LAND CONVEYED TO DUNAVANT ENTERPRISES, INC. BY DEED RECORDED IN VOLUME 413, PAGE 703, OFFICIAL PUBLIC RECORDS OF HARDEMAN COUNTY, AND MORE PARTICULARLY DESCRIBED BY METES AND BOUNDS AS FOLLOWS:

BEGINNING at a replaced spike nail set in the centerline of Mulkey Road at the Southeast corner of said Section 16, A-1692 and said Dunavant Enterprises, Inc. tract, for the Southeast corner of this tract;

THENCE N 88° 15' 03" W, with the centerline of Mulkey Road, the South line of Sections 16, A-1692 thru 12, A-1595 and the South line of said Dunavant Enterprises, Inc. tract, at 3,014.5 feet pass a spike nail set at the Southwest corner of said Section 16, A-1692, at 5,161.7 feet pass a spike nail set at the Southwest corner of said Section 15, A-550, at 7,561.6 feet pass an iron rod set at the Southwest corner of said Section 15, A-550 and continuing on the same course a total distance of 15,069.24 feet to an iron rod set in East bank of the Red River, for the Southwest corner of this tract;

THENCE with the East bank of the Red River and the East line of said Dunavant Enterprises, Inc. tract as follows: N 40° 26' 20" E a distance of 483.79 feet to a spike nail set in bank, for an angle corner of this tract; N 56° 22' 33" E a distance of 403.18 feet to a spike nail set in bank, for an angle corner of this tract; N 41° 59' 05" E a distance of 875.63 feet to a spike nail set in bank, for an angle corner of this tract; N 28° 26' 22" E a distance of 647.16 feet to a spike nail set in bank, for an angle corner of this tract; N 21° 32' 06" E a distance of 526.66 feet to a spike nail set in bank, for an angle corner of this tract; N 04° 44' 04" E a distance of 497.31 feet to a spike nail set in bank, for an angle corner of this tract; N 08° 07' 48" W a distance of 562.87 feet to a spike nail set in bank, for an angle corner of this tract; N 05° 31' 03" E a distance of 1791.64 feet to a spike nail set in bank, for an angle corner of this tract; N 02° 30' 48" W a distance of 597.91 feet to a spike nail set in bank, for an angle corner of this tract; N 09° 15' 24" W a distance of 945.11 feet to a spike nail set in bank, for an angle corner of this tract; N 08° 46' 57" W a distance of 775.08 feet to a spike nail set in bank, for an angle corner of this tract; N 05° 30' 24" W a distance of 1094.33 feet to a spike nail set in bank, for an angle corner of this tract; N 05° 44' 02" E a distance of 551.07 feet to a spike nail set in bank, for an angle corner of this tract; N 47° 24' 09" E a distance of 2444.13 feet to a spike nail set in bank, for an angle corner of this tract; N 67° 39' 45" E a distance of 204.08 feet to a spike nail set in bank, for an angle corner of this tract; N 36° 55' 44" E a distance of 147.21 feet to a spike nail set in bank, for an angle corner of this tract; N 38° 12' 46" E a distance of 633.92 feet to a spike nail set in bank, for an angle corner of this tract; N 59° 50' 02" E a distance of 118.97 feet to a spike nail set in bank, for an angle corner of this tract; N 89° 20' 06" E a distance of 238.10 feet to a spike nail set in bank, for an angle corner of this tract; S 87° 28' 38" E a distance of 389.59 feet to a spike nail set in bank, for an angle corner of this tract; S 85° 11' 03" E a distance of 378.80 feet to a spike nail set in bank, for an angle corner of this tract; S 82° 35' 31" E a distance of 272.43 feet to a spike nail set in bank, for an angle corner of this tract; N 88° 59' 44" E a distance of 217.09 feet to a spike nail set in bank, for an angle corner of this tract; S 79° 54' 18" E a distance of 167.42 feet to a spike nail set in bank, for an angle corner of this tract; N 86° 54' 49" E a distance of 193.60 feet to a spike nail set in bank, for an angle corner of this tract; S 86° 12' 58" E a distance of 480.09 feet to a spike nail set in bank, for an angle corner of this tract; N 79° 18' 48" E a distance of 297.11 feet to a spike nail set in bank, for an angle corner of this tract; N 63° 01' 29" E a distance of 253.79 feet to a spike nail set in bank, for an angle corner of this tract; N 88° 03' 00" E a distance of 133.89 feet to a spike nail set in bank, for an angle corner of this tract; S 79° 36' 31" E a distance of 231.83 feet to a spike nail set in bank, for an angle corner of this tract; S 71° 07' 13" E a distance of 555.64 feet to a spike nail set in bank, for an angle corner of this tract; S 63° 06' 32" E a distance of 1097.14 feet to a spike nail set in bank, for an angle corner of this tract; S 55° 51' 42" E a distance of 532.62 feet to a spike nail set in bank, for an angle corner of this tract; S 70° 04' 48" E a distance of 520.06 feet to a spike nail set in bank, for an angle corner of this tract; S 69° 26' 27" E a distance of 695.62 feet to a spike nail set in bank, for an angle corner of this tract; S 80° 24' 36" E a distance of 619.80 feet to a spike nail set in bank, for an angle corner of this tract; S 82° 05' 18" E a distance of 560.10 feet to a spike nail set in bank, for an angle corner of this tract; S 80° 37' 14" E a distance of 196.69 feet to a spike nail set in bank, for an angle corner of this tract; S 87° 19' 02" E a distance of 89.76 feet to a spike nail set in bank, for an angle corner of this tract; S 80° 18' 30" E a distance of 257.47 feet to a spike nail set in bank, for an angle corner of this tract; S 81° 15' 23" E a distance of 747.73 feet to a spike nail set in bank, for an angle corner of this tract; S 89° 27' 58" E a distance of 304.51 feet to a spike nail set in bank, for an angle corner of this tract; N 87° 55' 57" E a distance of 1041.98 feet to a spike nail set in bank, for an angle corner of this tract; N 84° 50' 57" E a distance of 279.73 feet to a spike nail set in bank, for an angle corner of this tract; N 86° 46' 23" E a distance of 150.51 feet to a spike nail set in bank, for an angle corner of this tract; and S 84° 50' 58" E a distance of 333.28 feet to an iron rod set in bank at the Northeast corner of said Section 16, A-1692 and said Dunavant Enterprises, Inc. tract, for the Northeast corner of this tract;

THENCE with the East line of said Section 16, A-1692 and said Dunavant Enterprises, Inc. tract as follows: S 02° 08' 52" W, at 966.1 feet pass a railroad tie fence corner and continuing on the same course a total distance of 2,030.75 feet to a wooden fence corner at an angle corner of said Section 16, A-1692 and said Dunavant Enterprises, Inc. tract, for an angle corner of this tract; S 00° 17' 03" E, at 8078.42 feet pass a 6" wooden fence corner in the fenced North line of Mulkey Road and continuing on the same course a total distance of 5,078.42 feet to the PLACE OF BEGINNING and containing 3330.88 acres of land.



Devin G. Smith 9/1/19
 DEVIN G. SMITH
 REGISTERED PROFESSIONAL LAND SURVEYOR NO. 5849

BASIS OF BEARINGS ARE NAD 83 - TEXAS NORTH CENTRAL

BOUNDARY SURVEY OF
3330.88 ACRES OUT OF SECTIONS 12, A-1595
THRU SECTIONS 14, A-1594, H. E. & W. T.
RAILROAD COMPANY SURVEY AND SECTIONS 15,
A-550 AND 16, A-1692, C. & M. RAILROAD
COMPANY SURVEY, HARDEMAN COUNTY, TEXAS

CORLETT, PROBST & BOYD, P.L.L.C.
 ENGINEERS - SURVEYORS
 4605 OLD JACKSBORO HIGHWAY
 WICHITA FALLS, TEXAS 76302

SCALE: 1" = 1000' SEPTEMBER, 2019 SHEET 1 OF 1

C:\WAL\2019\3330.88 ACRES OUT OF SECTIONS 12, A-1595, 13, A-601, 14, A-1594, H. E. & W. T. RAILROAD COMPANY SURVEY AND SECTIONS 15, A-550, 16, A-1692, C. & M. RAILROAD COMPANY SURVEY, HARDEMAN COUNTY, TEXAS, SAID 3330.88 ACRES BEING THE SAME TRACT OF LAND CONVEYED TO DUNAVANT ENTERPRISES, INC. BY DEED RECORDED IN VOLUME 413, PAGE 703, OFFICIAL PUBLIC RECORDS OF HARDEMAN COUNTY, AND MORE PARTICULARLY DESCRIBED BY METES AND BOUNDS AS FOLLOWS: 9/1/19